



# MONTHLY MEMBERSHIP PROGRESS REPORT

District 325A2

Results as of: 08/31/2017

GMT: KHAGENDRA SITLAULA

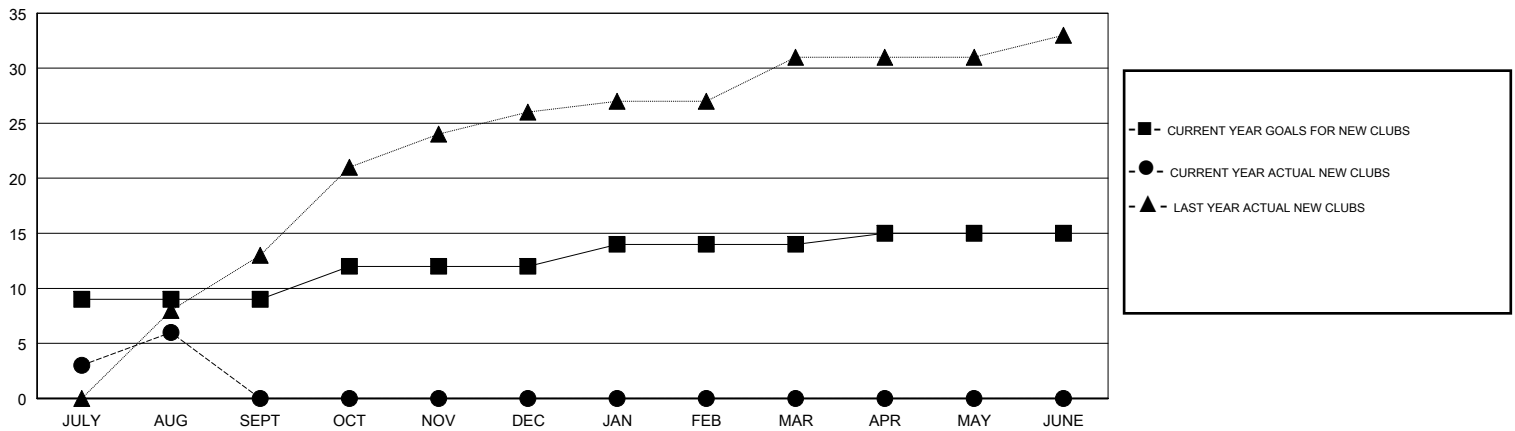
LOCATION NEPAL

GMT CA

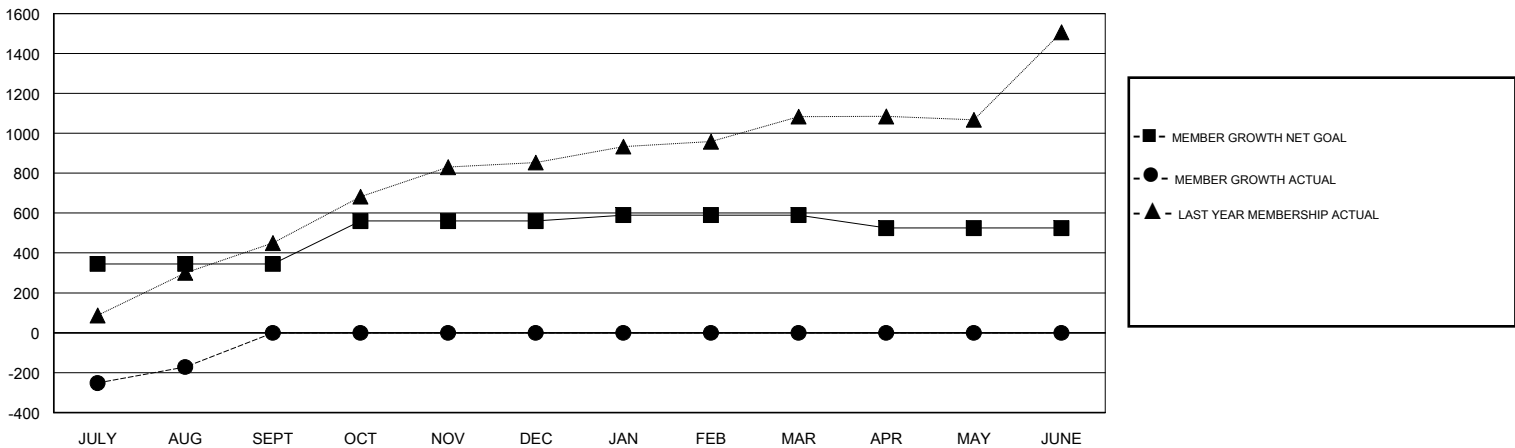
Clubs			
RESULTS FOR 2017-2018			
QUARTER	NEW CLUB GOAL	NEW CLUBS	DROPPED CLUBS
JULY/AUG/SEPT	9	6	0
OCT/NOV/DEC	3	0	0
JAN/FEB/MAR	2	0	0
APR/MAY/JUNE	1	0	0

Members			
RESULTS FOR 2017-2018			
QUARTER	MEMBER GROWTH NET GOAL	MEMBER GROWTH ACTUAL	DROPPED MEMBERS ACTUAL (including transfers)
JULY/AUG/SEPT	345	226	397
OCT/NOV/DEC	215	0	0
JAN/FEB/MAR	30	0	0
APR/MAY/JUNE	-65	0	0

GOALS AND ACTUAL NEW CLUBS CUMULATIVE



GOALS AND ACTUAL MEMBERS CUMULATIVE



DROPPED CLUBS: 0	33 CLUBS OF 161 ADDED 1 OR MORE NEW MEMBERS	<u>GENDER DISTRIBUTION</u>	
DROPPED MEMBERS		MALE	3,405 (73.35%)
DECEASED	1	FEMALE	1,237 (26.65%)
CLUB CANCELLED	0	Women Percentage Fiscal Year Goal: 25%	
OTHER	396	<a href="#">CLICK HERE FOR CUMULATIVE MEMBERSHIP DATA</a>	
TOTAL	397	TOTAL FAMILY UNIT MEMBERS	2,401
		FAMILY MEMBERS PAYING HALF DUES	1,448